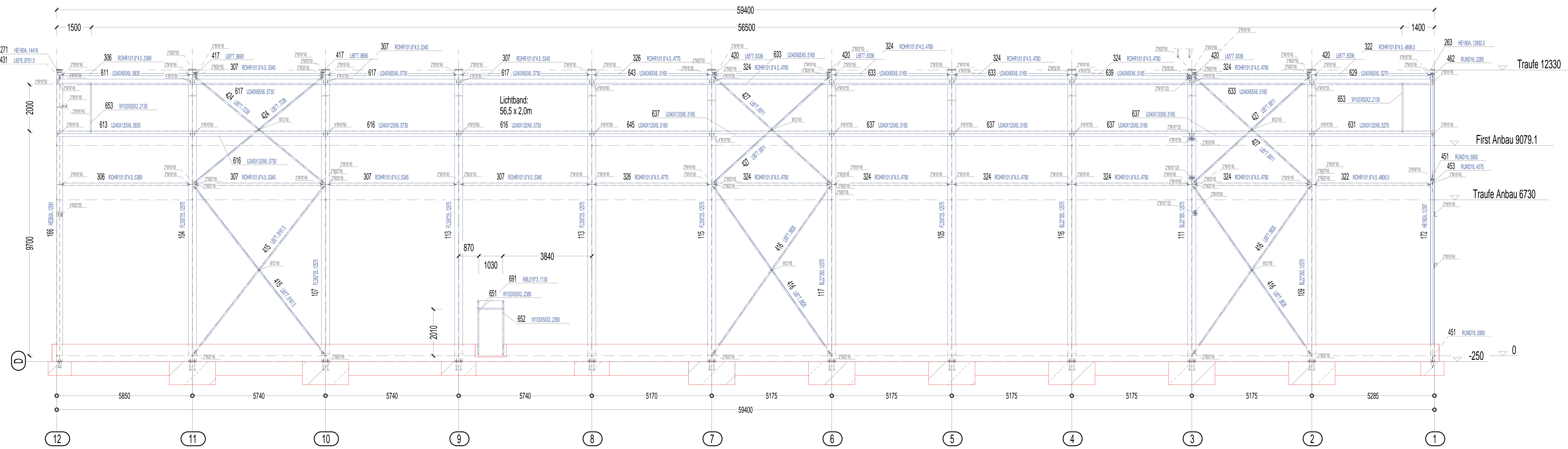
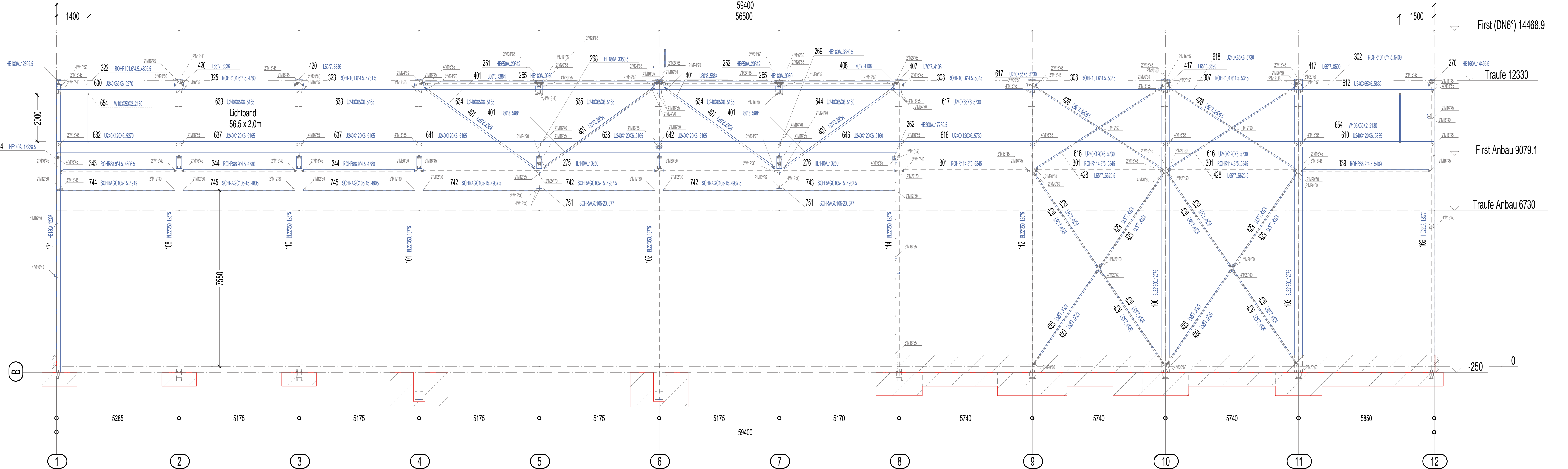


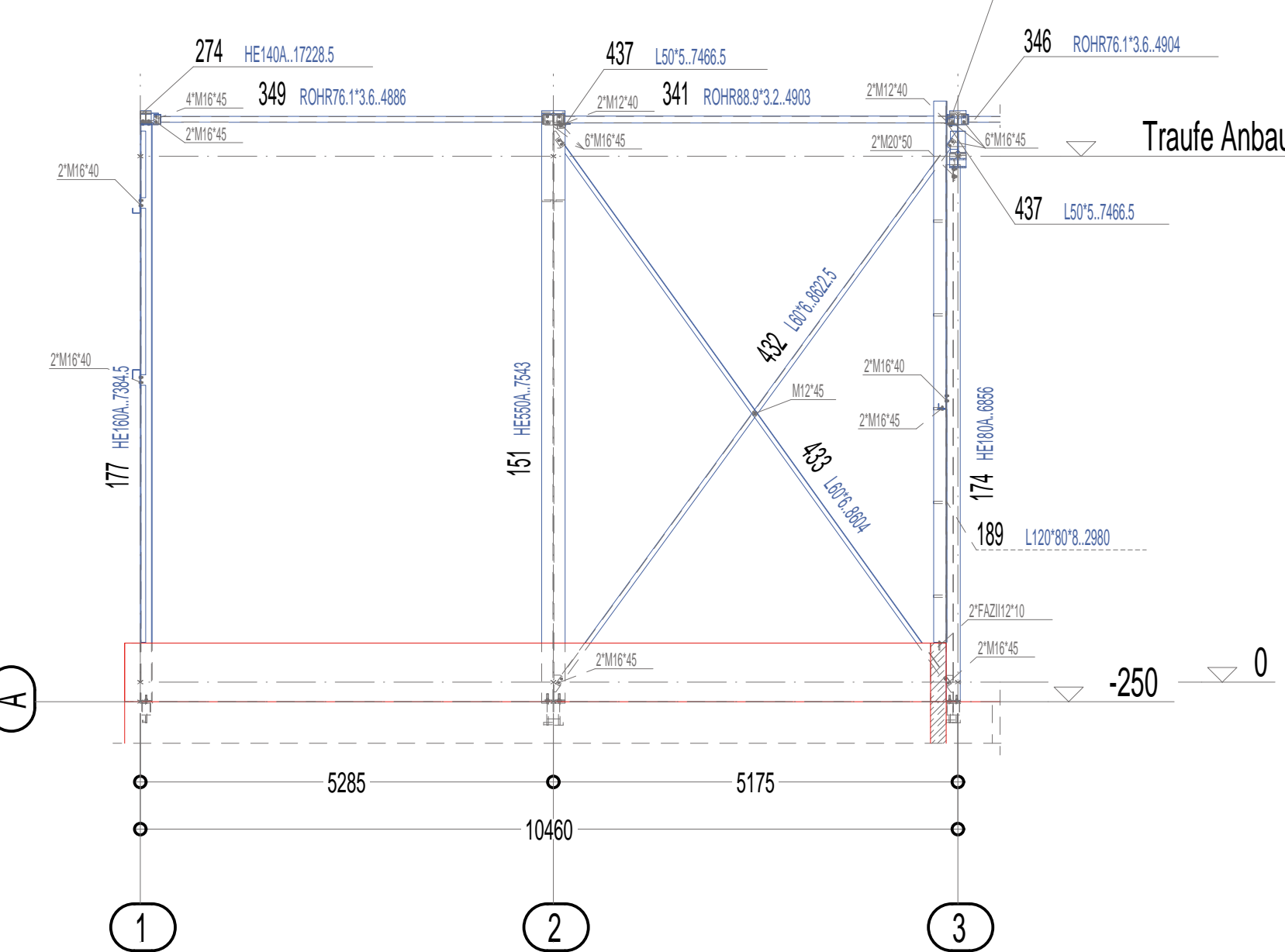
Längswand in Achse D, 1:75



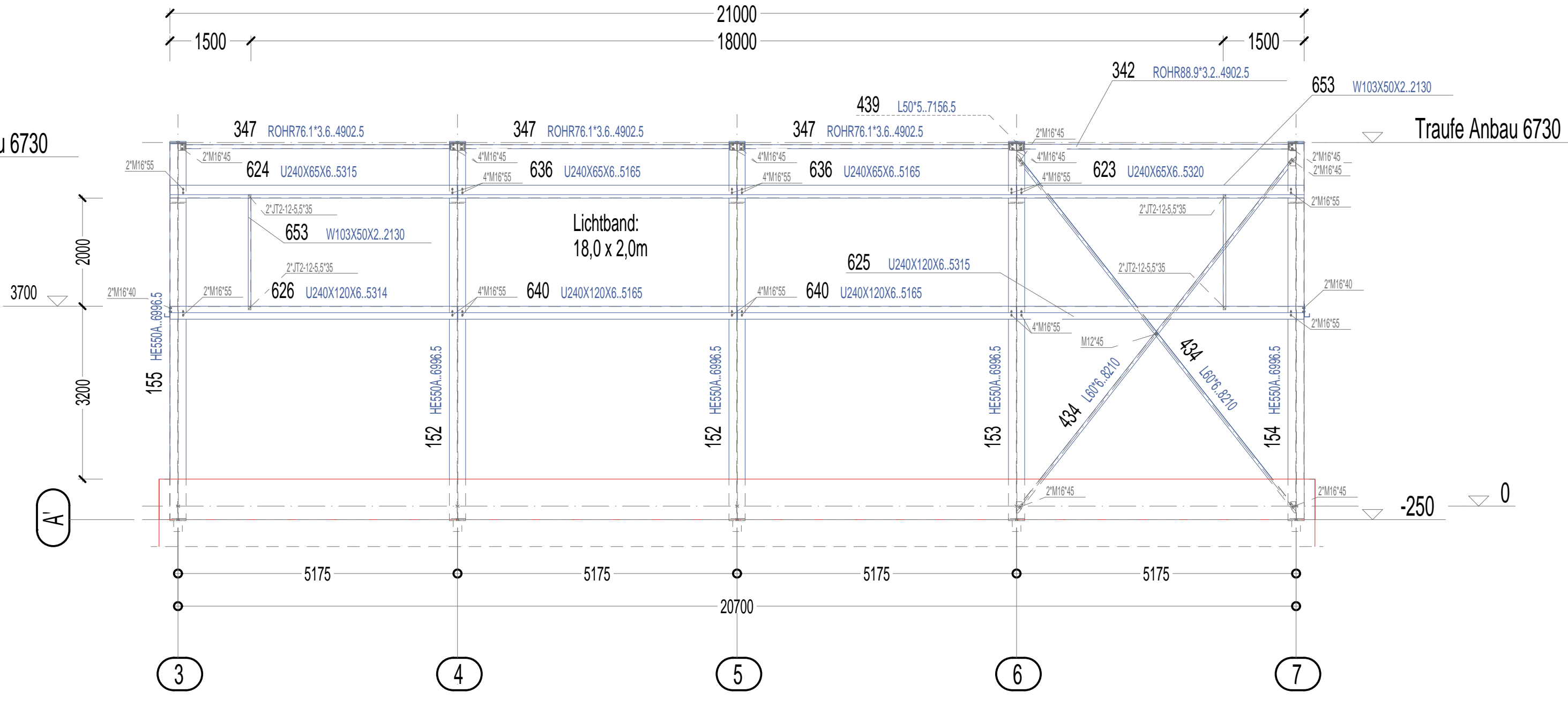
Längswand in Achse C, 1:75



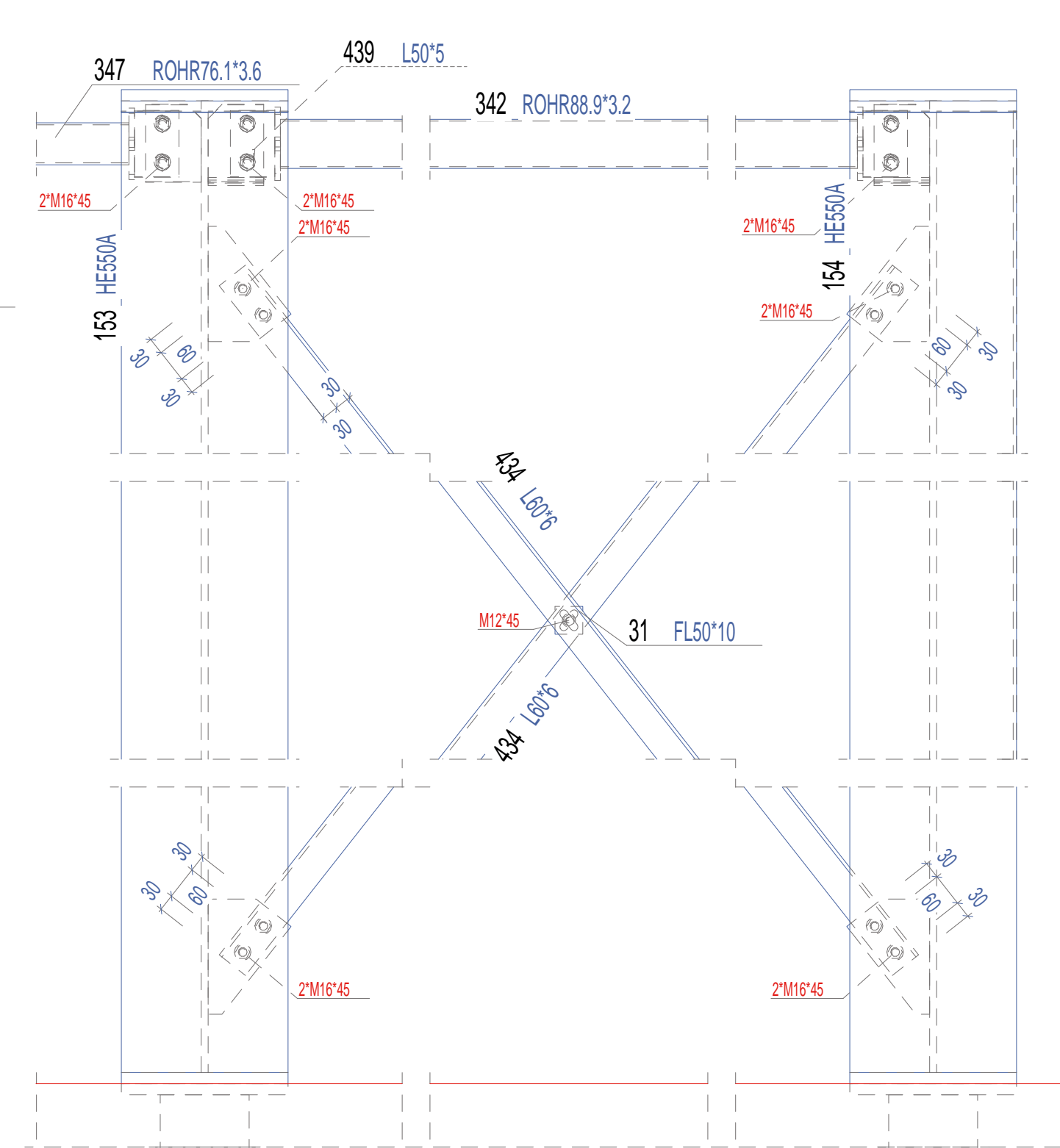
Längswand in Achse A, 1:75



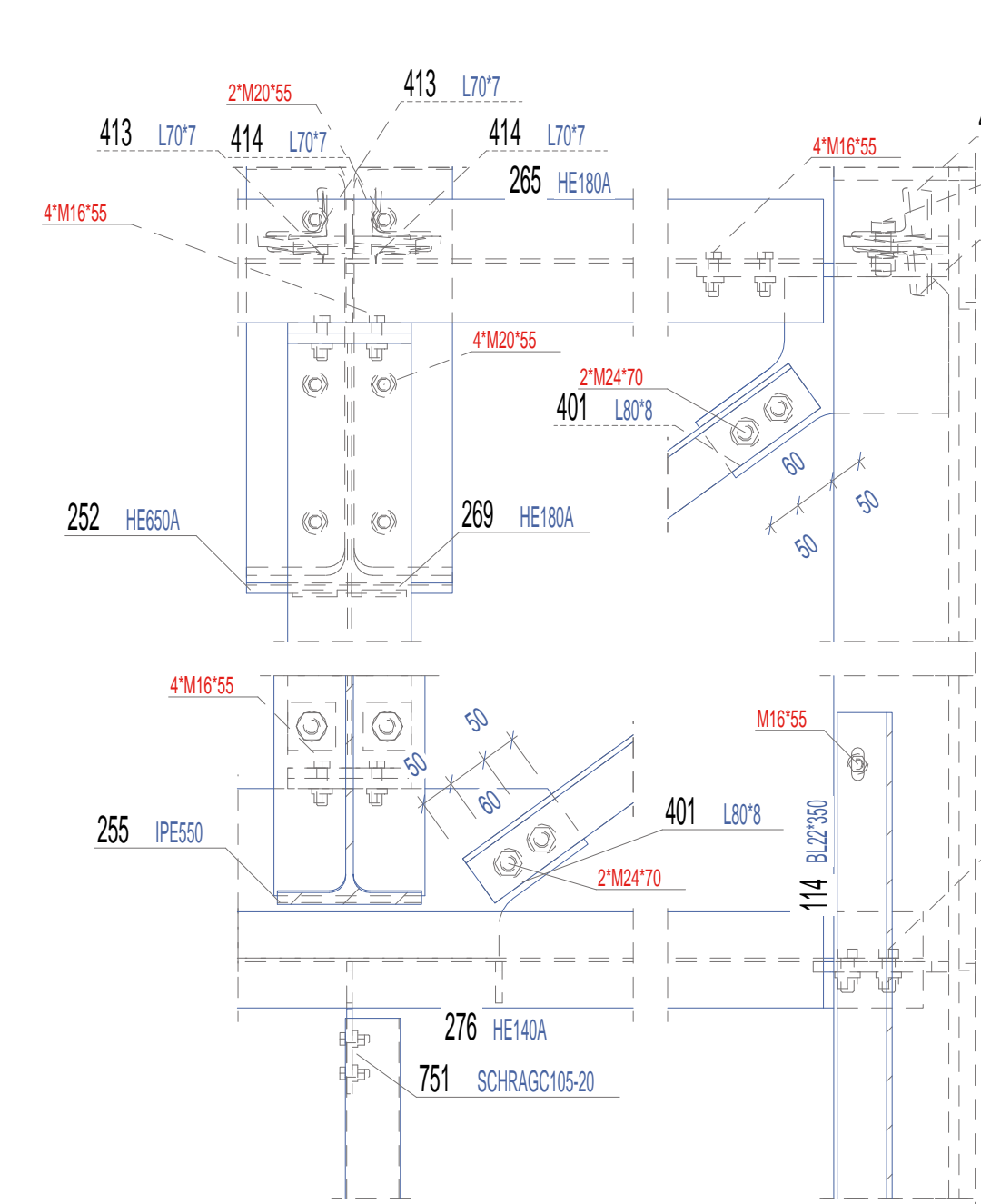
Längswand in Achse A', 1:75



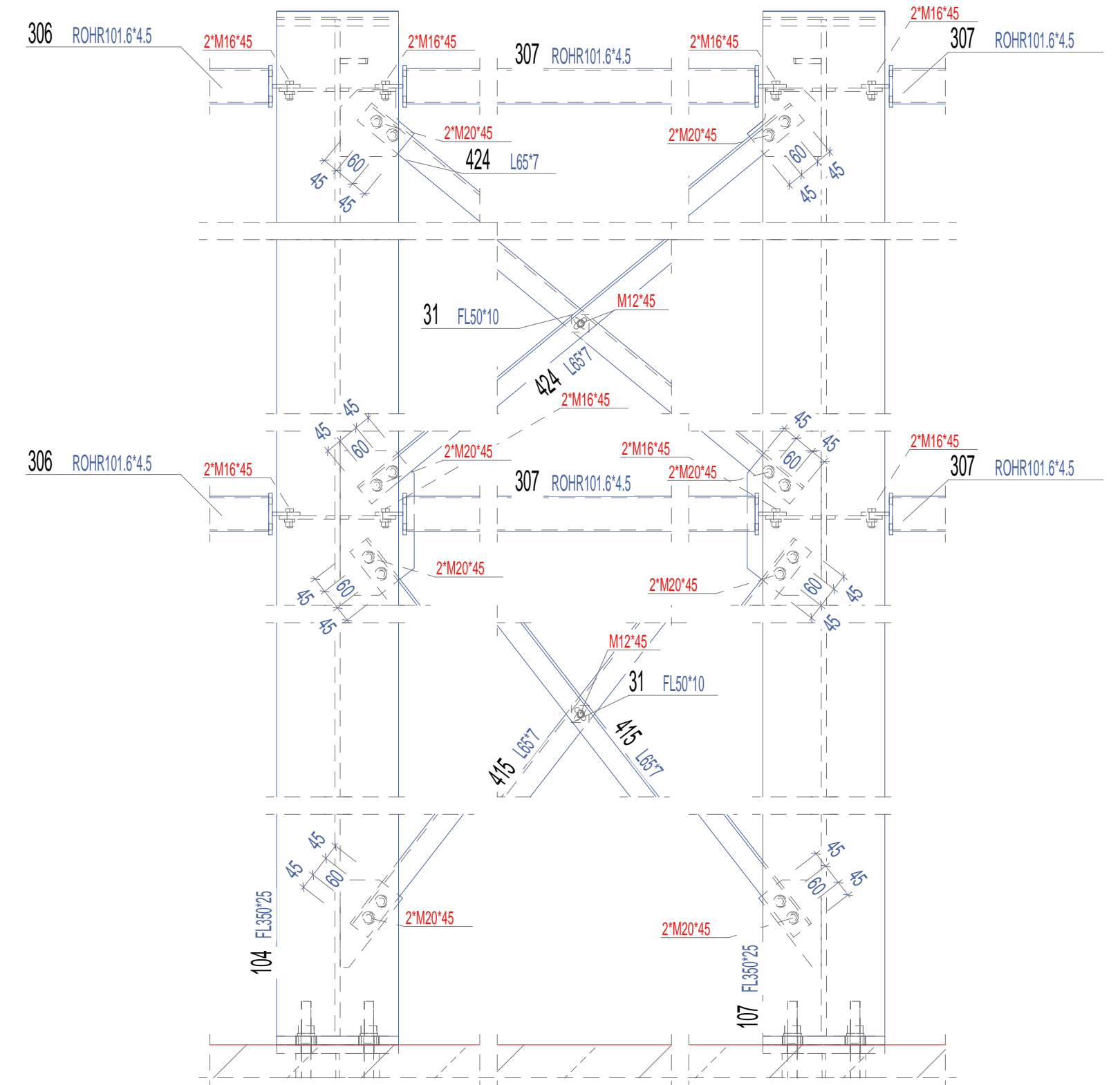
Montageprinzip Wandverband 03  
mit L60\*6, 1:10



Montageprinzip Fachwerk FW 01  
mit 2x L80\*8, 1:10



Montageprinzip Wandverband WV 01  
mit L65\*7, 1:15



Montageprinzip Wandverband WV 02  
mit L65\*7, 1:15

